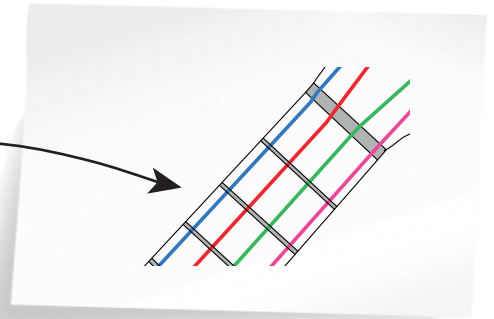


# Ukulele Tango Teacher Notes

## A whole-class performance piece

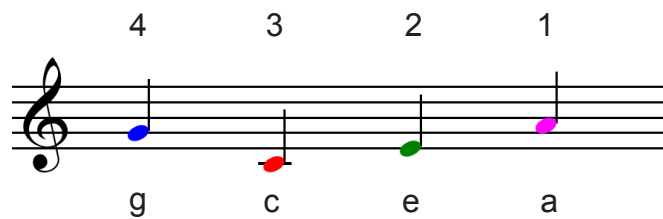
Downloaded from [www.ringingstringspublications.co.uk](http://www.ringingstringspublications.co.uk).

A free extra resource for the "Rainbow Ukulele" tutor book.  
Note colours are as in the book (see drawing for colour code).  
Chart and backing track available as separate downloads.



by Hugh Boyde.

1. For the chart to work, strings need to be colour coded following the scheme in the "Rainbow Ukulele" tutor book:



2. Pupils learn the following rhythm aurally. They could clap it, say it (doo-doo, doo-doo, doo) or play it on any open string(s).

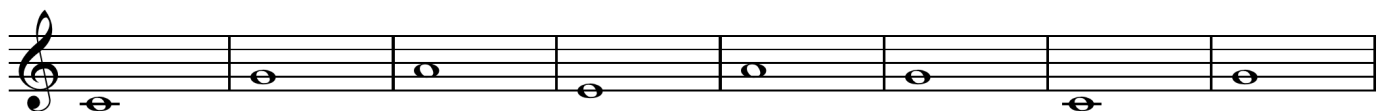


3. Open string part.

Pupils will be able to manage this as soon as they can find all four open strings confidently and repeat the rhythm above. On the chart, they simply see colour names and find the appropriate string. They play the entire rhythm once for each box in the chart (each box is one bar).

The exclamation mark in the last bar indicates a "stop". The note is played on beat 1, and beats 2, 3, 4 counted silently.

The open-string line is shown here in semibreves on the staff in case other instruments are playing along:



# Ukulele Tango

## A whole-class performance piece

Downloaded from [www.ringingstringspublications.co.uk](http://www.ringingstringspublications.co.uk).

### 4. "Quartet arrangement".

This activity requires pupils to be able to find frets 1, 2 and 3.

The class is divided into 4 roughly equal groups, with one group assigned to each string.

Each group plays on a single string, repeating the tango rhythm (above) once for each box in the chart, fretting the string as shown.

To practice, the whole class can work together playing any one of the parts.

When the parts are combined, they make a nice four-part harmony.

The chords are shown here on the staff, in case you would like to have other instruments playing along.

The image shows two musical staves, each with a treble clef. The first staff contains eight measures of chords: C, G7, Am, E7, Am, G7, C, and G7. The second staff contains seven measures of chords: C, G7, Am, E7, Am, G7, and C, followed by a final measure with a double bar line and a fermata. Each chord is represented by a set of four dots on the staff, indicating the fret positions for the four strings of the ukulele.

### 5. Extension ideas:

Pupils could make up their own alternative rhythms rather than using the one above.

More able pupils could attempt strumming the chords (the shapes are all illustrated on p. 28 of "Rainbow Ukulele")