

The flat sign at the beginning of the line is called the KEY SIGNATURE. All notes on this line are to be played flat.




Clementine

USA traditional

In a ca - vern in a can - yon ex - ca - va - ting for a mine, lived a
mi - ner for - ty - nin - er and his daugh - ter Clem - en - tine!

Suggested accomp. patterns 5, 6, 17, 18

ARTICULATION SIGNS

-  = let the note ring on
-  = staccato
-  = accent

Klezmer Tune

HB

f *p* *f* *p*

DC al Fine

Suggested accomp. patterns 1, 2, 10-13

More sharps (and flats)

Open String Fret 1 Fret 2 Fret 3

3

The sharp and flat notes can all be called by 2 different names. If you start from a C and raise it by one fret (C sharp) you will reach the same note as if you had started from D and lowered it by one fret (D flat).

See page 28 for a complete fingerboard chart of all the notes in this book, including the flats and sharps.

Memories of Naples

HB

1. 2.

mp

mf

Lonesome Road Blues

C F C F F7 C

I'm going down that long lone some road, Lo - rd, Lord, Going down that long lone some road,

F F7 C

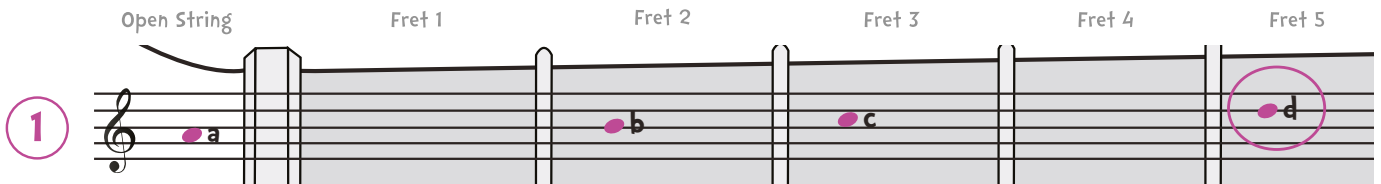
I'm going down that long lone some road Lord, Lord, and I

G7 C

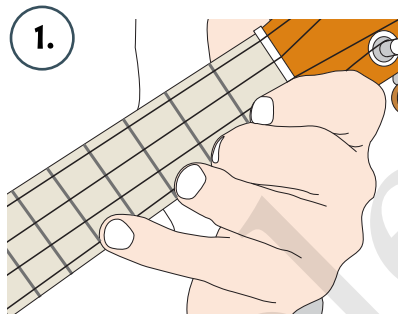
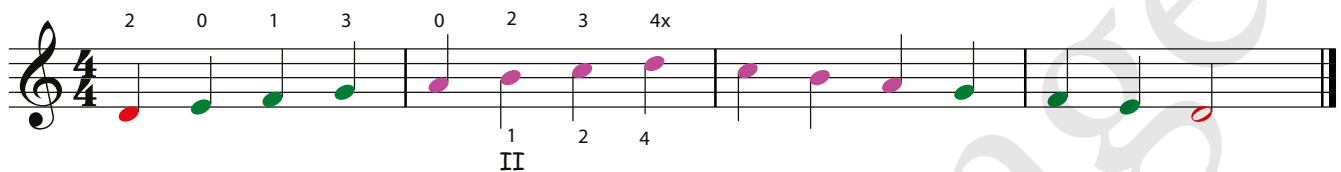
ain't gonn - a be treat - ed this - a - way.

Suggested accomp. patterns 1, 2, 10-15

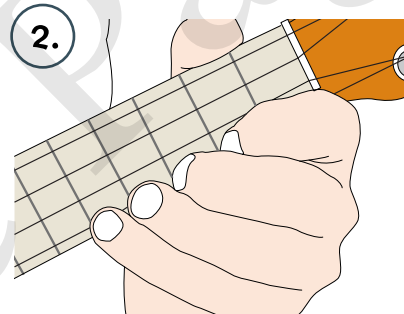
A new note (high D)



Scale practice with high D note



1. Stay in normal (1st) position and stretch 4th finger to 5th fret.



2. Move your whole hand forward to 2nd position (so your 1st finger is at the 2nd fret).

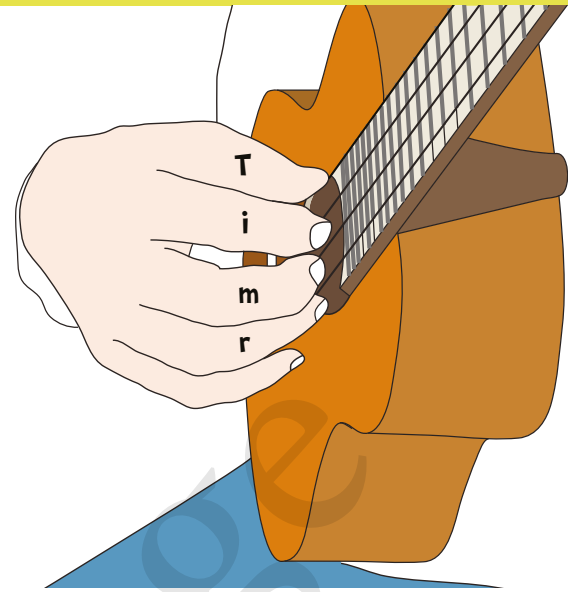
Two ways of reaching fret 5

The Drunken Sailor

Suggested accomp. patterns 1-4, 10-14

Crossing 3 strings with T, i, m

The next 2 pieces have patterns which lie across three strings. Try plucking with “one digit per string” – in this case T for blue, i for red and m for green.



Try resting your ring finger on the pink string for the first four lines.

Lullaby

HB

T i m T i m etc.

mf *sim.* *f* *mp*

1. 2.

